



ROCLAMP 68.05 - 9806805005

For a positive and secure connection of two rail ends. At insulated joints, fractured rails and detected rail defects, from prevention to repair. Used worldwide.

Depending on the position and type of the fracture point, either two short or one long rail clamp is used.

Application of short standard version

To connect two different rail types via transition fishplates or at the fracture points of a welded rail joint, a short rail clamp is fitted to both ends of the fishplate.

The short variant is particularly suited for tight spaces, e.g. at stock rails, in the switch blade or frog area but also for the use on cropped fishplates.

Application of long standard version

A long rail clamp is sufficient for connecting an insulated rail joint in the sleeper crib.

THE ADVANTAGES. YOUR BENEFITS.

Various possibilities of use

- Different versions for various rail types
- Can also be deployed for thermite welding with the use of cropped fishplates
- Can also be used on slab track
- EBA approval
- DB user acceptance

Cost effectiveness

- Track remains open for traffic thanks to quick installation
- Long service life at reduced inspection intervals and low maintenance effort
- High passing speed, depending on rail defect

Safe & user-friendly

- Patented safety latch (screw locking)
- Precise adjustment to rail profile and fishplate
- Perfect fit due to 3-point support concept for the appropriate rail/fishplate combination
- Rail clamp and securing plate are secured with the same torque
- Colour coding in line with rail profile
- Easy to use thanks to compact design and minimum excavation of ballast

SPECIFICATION	Long
For rail types	60E1, 54E3, 49E1 (each with suitable fishplate)
Permitted speed	up to 200 km/h, depending on infrastructure manager
Dimensions (L x W x H)	190 x 280 x 130 mm
Tightening torque	580 Nm
Weight	21.5 kg (depending on specified rail profile)



SPECIFICATION	Short
For rail types	60E1, 54E3, 49E1 (each with suitable fishplate)
Permitted speed	up to 200 km/h, depending on infrastructure manager
Dimensions (L x W x H)	100 x 280 x 130 mm
Tightening torque	580 Nm
Weight	11.5 kg (depending on specified rail profile)

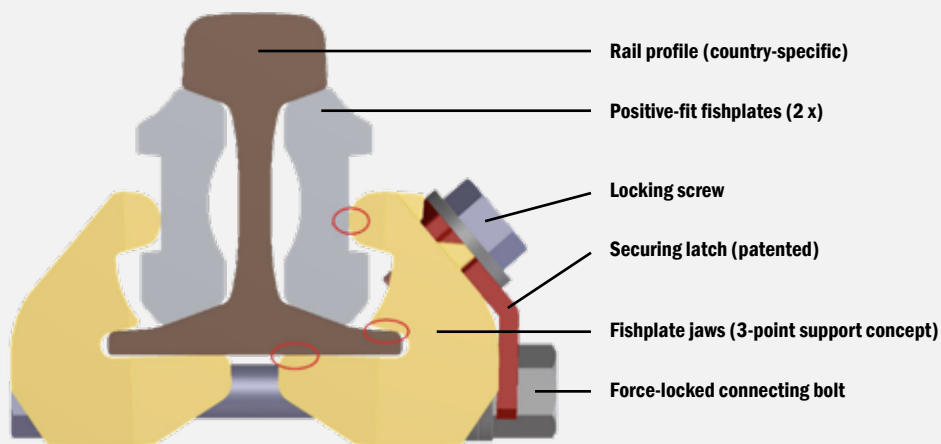


The following countries can also be supplied with:

- **Australia:** short and long version for rail profiles AS53Kg, AS60Kg, AS68Kg, AS41 kg, AS47 kg
- **Belgium:** short version for rail profiles 50E2, 50E2T1, 60E1
- **Denmark:** short version for rail profiles 60E1, 45E2
- **Germany:** short and long version for rail profiles 50E6, 54E1, 60E2
- **France:** short and long version for rail profiles 49E1, 60E1, 54E3
- **United Kingdom:** short and long version for rail profiles BS113A, 60E1, 49E1, 39E1, short version for rail profile S41-R10
- **New Zealand:** long version for rail profiles OT50 (NZ50kg), 91lb, NZR, AS50kg, IRS 52 kg, 48,5 kg
- **Lithuania:** short version for rail profile R65

The rail clamps listed are not suitable for grooved rails. For any queries concerning further rail clamps or your specific rail/fishplate combination, please get in touch with your ROBEL contact.

Schematic diagram of installed rail clamps:



ACCESSORIES

- 9002501790 Torque wrench with adjusting scale automatic release tightening torque 130 – 650 Nm 3/4 inch square drive weight from 2.9 kg reversible with push-in ratchet
- 9002501120 Socket AF 38 or AF 41 Hexagon socket wrench insert 3/4 inch square drive

- 9001200131 Straight fishplate FL30a, for rail profile 60E1 (suitable for version 4 and 5)
- 9001201119 Straight fishplate FL14a, for rail profile 54E3 (suitable for version 4 and 5)
- 9001200129 Straight fishplate FL41/49, for rail profile 49E1 (suitable for version 4 and 5)

